

Circle of Care, Inc.  
Community Health Needs Assessment  
Implementation Plan  
2022-2024



# Table of Contents

- I. Community Health Needs Assessments ..... 3
- II. Priority Healthcare Needs ..... 5
  - 1. Access to Behavioral Health Care ..... 5
  - 2. County Suicide Rate ..... 7
- III. Implementation Plans ..... 8

# Community Health Needs Assessment

---

Circles of Care, Inc. participated with both Central Florida Cares Health System (CFCHS) and the Space Coast Health Foundation (SCHF) to prepare a Community Health Needs Assessment (CHNA). Published in 2022, both reports entail a systematic, data-driven approach to determining the health status, behaviors and needs of residents in Brevard County to inform decisions and guide efforts to improve community health and wellness. The CFCHS concentrated on the specific behavioral health needs of the community whereas the SCHF focused on the broader umbrella of all community health needs.

The SCHF project incorporates data from primary research, through the PRC Community Health Survey. PRC is a nationally recognized health care consulting firm with extensive experience conducting Community Health Needs Assessments in hundreds of communities across the United States since 1994. <sup>i</sup>

The goals of the study were:

- **To develop a comprehensive understanding of healthcare needs and gaps for Brevard County residents.**
- **To identify healthcare priorities and build an implementation plan to address those priorities.**
- **To build upon prior studies of key health indicators.**
- **To improve residents' health status, increase their life spans, and elevate their overall quality of life.** A healthy community is not only one where its residents suffer little from physical and mental illness, but also one where its residents enjoy a high quality of life.
- **To reduce the health disparities among residents.** By gathering demographic information along with health status and behavior data, it will be possible to identify population segments that are most at-risk for various diseases and injuries. Intervention plans aimed at targeting these individuals may then be developed to combat some of the socio-economic factors which have historically had a negative impact on residents' health.
- **To increase accessibility to preventive services for all community residents.** More accessible preventive services will prove beneficial in accomplishing the first goal (improving health status, increasing life spans, and elevating the quality of life), as well as lowering the costs associated with caring for late-stage diseases resulting from a lack of preventive care.
- **To serve as a resource for individuals and agencies to identify community health needs.**

- **To fulfill the community health benefit requirements as outlined in Section 5007 of the Patient Protection and Affordable Care Act (PPACA).**

To achieve these goals the assessments incorporated data from primary research (the PRC Community Health Survey) and secondary research (vital statistics and other existing health-related data), allowing for trending and comparison to benchmark data at the state and national levels.

Of particular note is that the prior two cycles of needs assessment conducted by both the SCHF and the Health Council of East Central Florida focused on general health care with less attention drawn to behavioral healthcare needs. This cycle, the priorities for Brevard County clearly highlight the importance of addressing behavioral healthcare when evaluating the overall health of our county.

**A total of 62 individuals helped prioritize leading health issues during three meetings held in April/May:**

- Community Agency Representatives
- SCHF Board Members
- SCHF Health Advisory Council, SCHF Task Force Members, SCHF Staff


**Prioritization results average multiple criteria ratings (scope/severity and ability to impact) across all meetings.**

© 2019 Professional Research Consultants, Inc.

## Prioritization Results

On a scale of 1 (low priority) to 10 (high priority)

7.96	Nutrition, Physical Activity & Weight
7.95	Mental Health
7.34	Substance Abuse
7.23	Access to Healthcare
6.59	Diabetes
6.47	Heart Disease & Stroke
6.36	Oral Health
6.03	Tobacco Use
5.91	Cancer
5.55	Respiratory Diseases
5.45	Potentially Disabling Conditions



Professional Research Consultants, Inc.

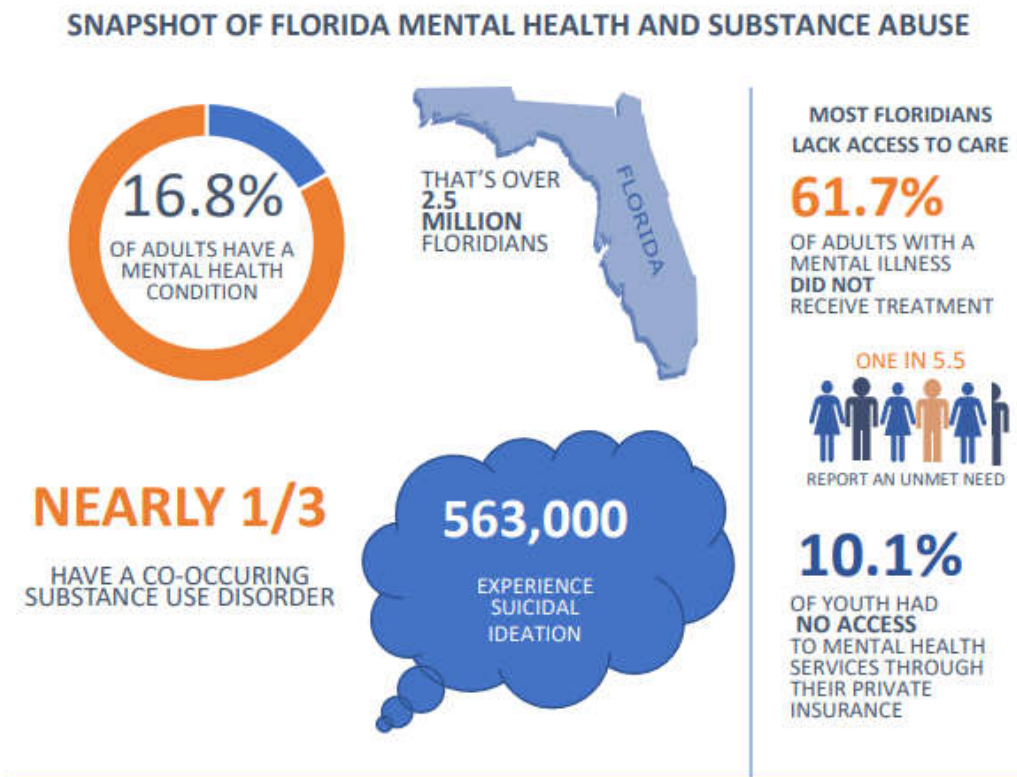
## PRIORITY HEALTHCARE NEEDS:

---

Two priority areas were identified by Circles from the CHNA. These priority areas are outlined below and are the basis for activities that Circles has and will implement to improve the health status of Brevard County.

- 1) Access to Behavioral Health Services: The uninsured/underinsured have greater barriers to care than those with third-party payer insurance, particularly with specialty services such as psychiatry. In the central region of Brevard, in particular, the CHNA identified access to psychiatric services as a healthcare focus.

The following graphic from the CFCHS CHNA highlights that over 60% of Floridians lack access to care for behavioral healthcare treatment.



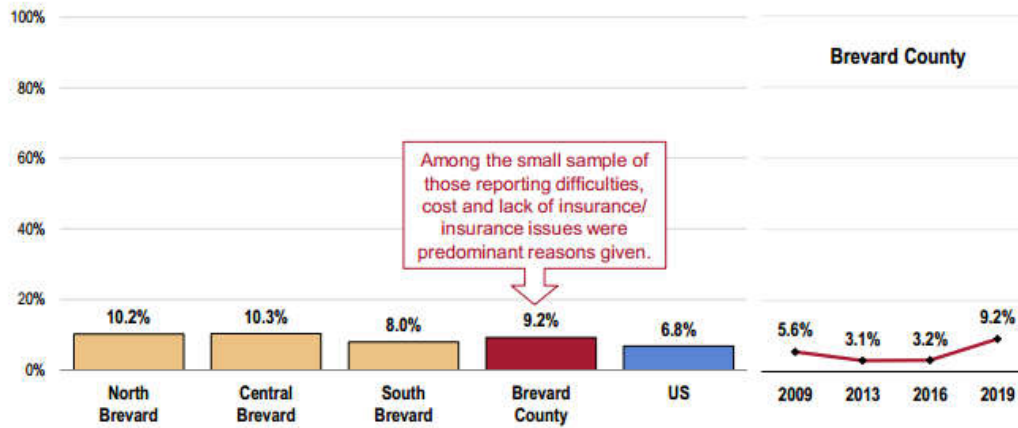
And the SCHF CHNA underscores the issue with results showing that over 9% of county adults needing services had difficulty accessing treatment.

## Difficulty Accessing Mental Health Services

A total of 9.2% of Brevard County adults report a time in the past year when they needed mental health services but were not able to get them.

- **DISPARITY:** Markedly higher among women, young adults, and those in low-income households.
- **TREND:** Denotes a statistically significant increase from previous survey findings.

### Unable to Get Mental Health Services When Needed in the Past Year



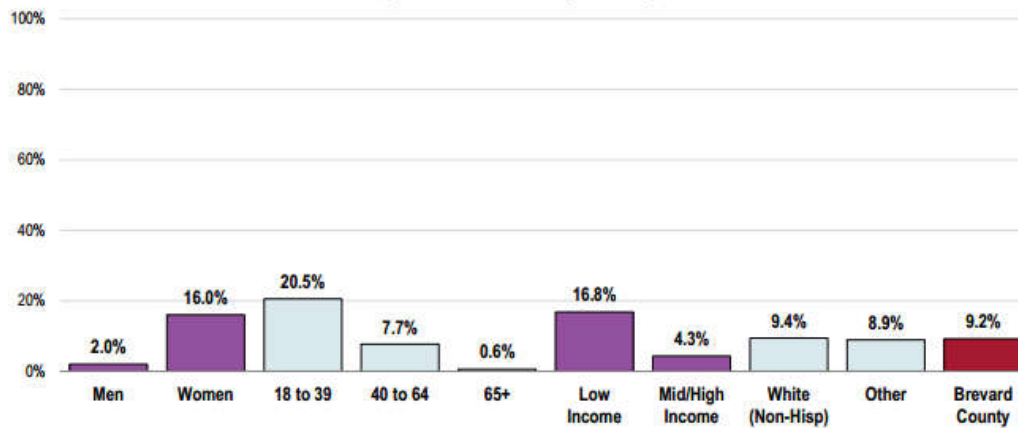
Sources:
 

- 2019 PRC Community Health Survey, Professional Research Consultants, Inc. [Items 105-106]
- 2017 PRC National Health Survey, Professional Research Consultants, Inc.

Notes:
 

- Asked of all respondents.

### Unable to Get Mental Health Services When Needed in the Past Year (Brevard County, 2019)



Sources:
 

- 2019 PRC Community Health Survey, Professional Research Consultants, Inc. [Item 105]

Notes:
 

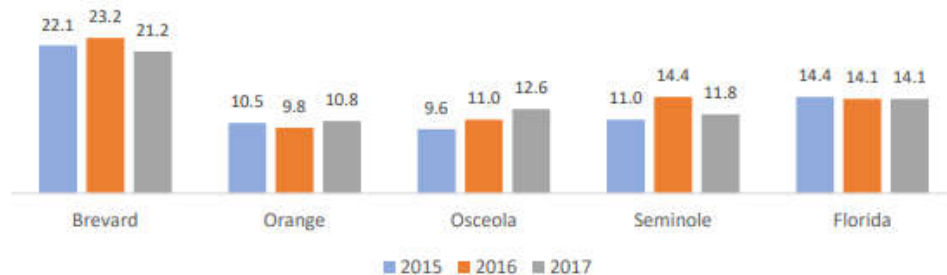
- Asked of all respondents.
- Hispanics can be of any race. Other race categories are non-Hispanic categorizations (e.g., "White" reflects non-Hispanic White respondents).
- Income categories reflect respondent's household income as a ratio to the federal poverty level (FPL) for their household size. "Low Income" includes households with incomes up to 200% of the federal poverty level; "Mid/High Income" includes households with incomes at 200% or more of the federal poverty level.

To address this priority area, Circles will investigate opportunities to

- Increase availability of substance use disorder detoxification and treatment
  - Designate additional inpatient beds for detoxification
  - Increase capacity for opiate disorder treatment
    - Medication Assisted Treatment
    - Treatment of families in the Child Welfare system
- Emphasize a ‘no wrong door’ aspect to care
  - Universal scheduling available at all agency entry points
  - Warm hand-offs to appropriate department scheduling
- Reduce the travel barriers associated with a 72 mile long county
  - Transportation vouchers
  - State funding for transportation

2) County Suicide Rate: The CFCHS CHNA noted that the number of statewide deaths per 100,000 by suicide has remained constant at 14.1 based on data for 2015-2017. Brevard County deaths have been significantly higher at an average of 22.2 per 100,000.

**FIGURE 19: SUICIDE AGE-ADJUSTED DEATH RATE (2015-2017)**



SOURCE: Florida Department of Health, Bureau of Vital Statistics (per 100,000 population)

As part of the community safety net, Circles will continue in its efforts to reduce the instance of suicide by:

- Continuing with the use of a Zero Suicide framework;
  - Enhanced Risk Assessments for all ambulatory populations
- Pursuing funding awards for Central Receiving System designation
  - Greater footprint of 24 hour crisis services
  - Mobile crisis services
  - Advanced evidence-based treatments of crisis patients

# Priority HealthCare Implementation Plans

---

## Priority Area 1: Access to Behavioral Health Services

### A. Key activities address the following health care indicators:

- Indicator 1: Total dollars spent on transportation of ambulatory patients to appointments
- Indicator 2: Numbers served with diagnosis of opiate use disorder
- Indicator 3: Detoxification bed days utilized

### B. Key Activities:

1. Circles of Care will utilize contracted incidental funding to provide transportation and reduce missed appointments for clients with transportation challenges.
2. Increase capacity for substance use disorders, including MAT and Child Welfare programs.
3. Circles will increase the number of designated Detoxification beds.

## Priority Area 2: Availability of Healthcare Coverage

### A. Key activities address the following health care indicators:

- Indicator 3: Contract awards for designation as a Central Receiving System
- Number of enhanced risk assessments in the ambulatory population
- Suicide rate per 100,000

### B. Key Activities:

1. Circles will lobby the Florida legislature for designation as a Central Receiving System that can be brought home to directly expand the available crisis services including mobile crisis support for Brevard County residents.
2. Circles of Care will expand its enhanced risk assessments of the inpatient populations to all ambulatory programs.
3. By expanding access to care, Priority Area 1, Circles of Care will interface with more suicidal residents affording a higher opportunity for intervention.

---

<sup>i</sup> Space Coast Health Foundation. (n.d.).2022 CHNA – Welcome. [https://www.schfbrevard.org/schf-releases-2022-community-health-needs-assessment/e \(schfbrevard.org\)](https://www.schfbrevard.org/schf-releases-2022-community-health-needs-assessment/e (schfbrevard.org))